

USB-DS12



# USB 3.0 TO SATA/IDE 2.5"/3.5"/5.25" HARD DRIVE ADAPTER



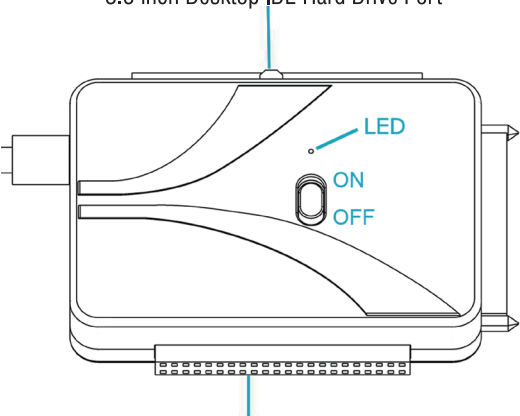
USER MANUAL

# Package Contents

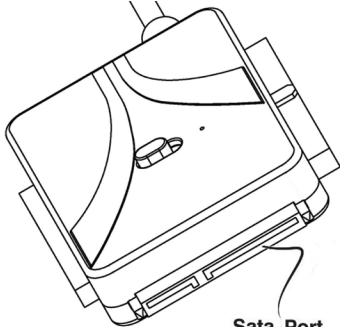


## Before You Get Started

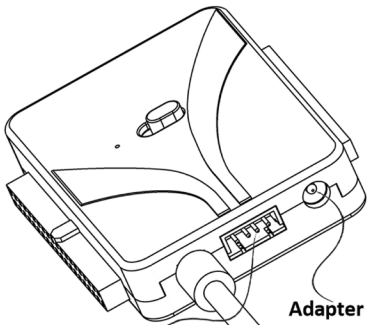
3.5 inch Desktop IDE Hard Drive Port



2.5 inch Notebook IDE Hard Drive Port



**Sata Port**

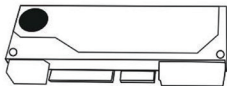


**Adapter Port**

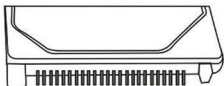
**3.5 inch IDE Power Cable Port**

# Installation Guide For 2.5" Notebook IDE Hard Drive

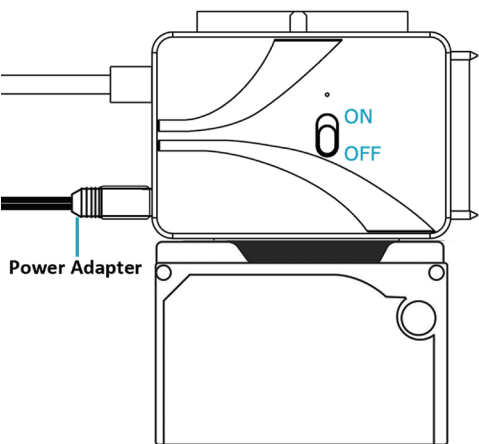
## How to distinguish between IDE and SATA Hard Drive



**SATA Hard Drive**

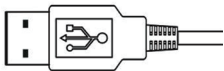


**IDE Hard Drive**



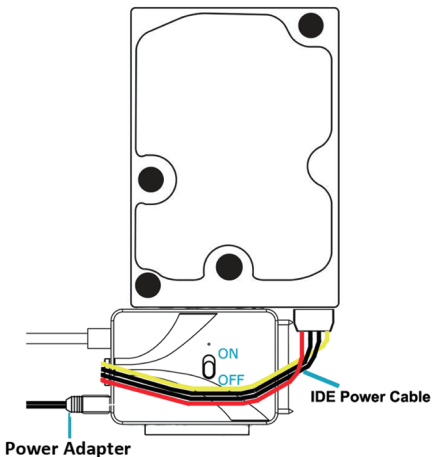
1. Connect the short 2.5" IDE connector from the Sabrent adapter to the pins on your 2.5" Hard Drive. Note the keyed pin and slot and make sure that the drive and the device line up properly and are securely connected.

**Please Note:** When you remove a hard drive from an existing laptop, you may need to first remove the outer cage and sometimes an additional converter that is covering the IDE or SATA connectors. (The hard drive is in a cage that needs to be removed, and there is a converter covering the pins.)



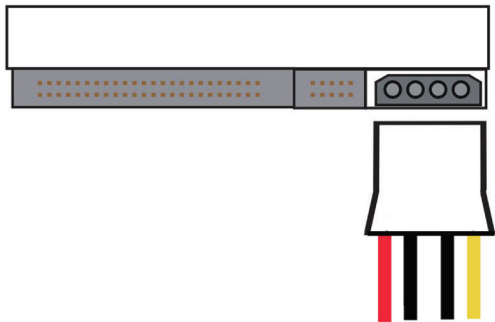
2. Connect the USB cable from the Hard Dive Adapter to an available USB port on your computer.
3. Connect the power adapter to the Power port of the Sabrent adapter and turn on the power.

# Installation Guide for 3.5" Desktop IDE Hard Drive



1. Most 3.5" IDE Hard Drives have jumpers. Make sure they are set to Master Only. (Note: Please refer to the drive manufacturer's website for more information regarding your specific hard drive model.)





2. One end of the IDE Power Cable is connected to the hard disk, and the other end is connected to the Sabrent adapter.

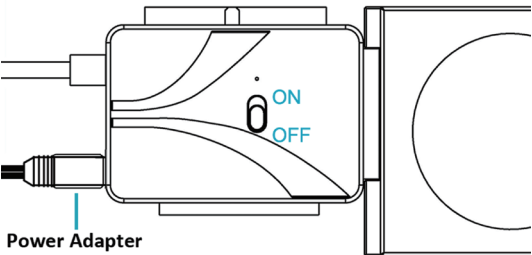
3. Connect the long 3.5 inch IDE connector to the pins on your hard drive. Note the keyed pin and slot and make sure that the drive and the device line up properly and are securely connected.



4. Connect the USB cable from the Sabrent converter to a USB port on your computer.

5. Connect the power adapter to the Power port of the Sabrent adapter and turn on the power.

## Installation Guide For 2.5"/3.5" SATA Hard Drive



1. Connect the Sabrent adapter to the SATA Hard Disk Drive.
2. Connect the USB cable from the Sabrent adapter to a USB port on your computer.
3. Connect the power adapter to the Power port of the Sabrent adapter and turn on the power.



The Hard Drive should now spin/vibrate, indicating that the Hard Drive is powering up. If the Hard Drive does not spin, it may indicate that the hard drive itself is no longer working. Quite often, older laptops or desktops that have failed may also have a malfunctioning hard drive. Only working drives can be accessed.

A drive letter should appear in MY COMPUTER, indicating that the Hard Drive has mounted and the data is accessible.

if the drive cannot be accessed:

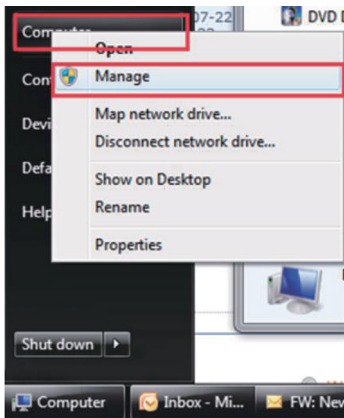
1. Try connecting to a different USB port on the computer (Sometimes rear ports work more reliable than front panel ports)
2. Try connecting to a different computer.
3. Try using a different Hard Drive.

if that still does not work, that may indicate that the Adapter itself is not working and needs to be replaced. if 2.5" drives work but 3.5" does not, this may indicate that the power supply has failed.

# Hard Drive Initialization

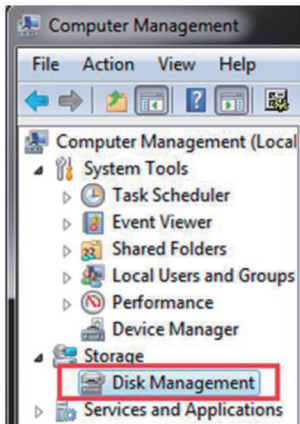
For Windows 2000/XP/VISTA/7, no drives or software are necessary.

If the Hard-Drive is brand new you may need to initialize it first in order to cause the Drive Letter to appear:



1. Click the Start button, right-click on "My Computer", and select "Manage".

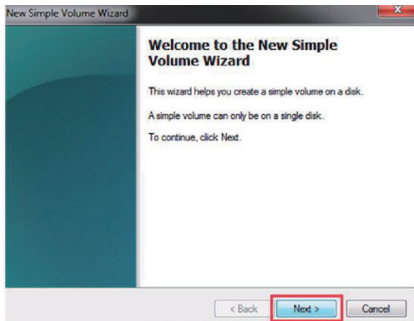
2. Click on “Disk Management”.



3. Locate the drive in the right column and right-click on the drive and click “New Simple Volume”.

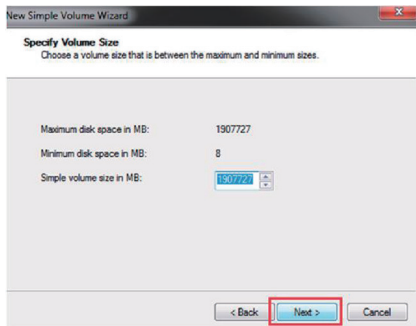


4. At the following prompt , click “Next”.

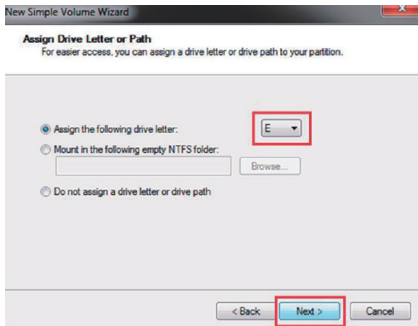




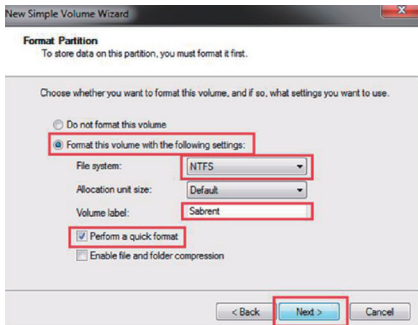
5. Click “Next”.



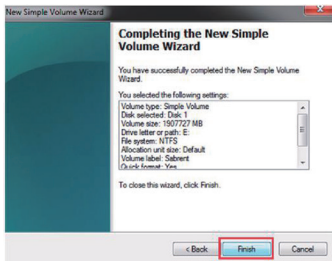
6. Assign a drive letter to the drive, then click “Next”.



7. Click on “Format this volume with the following setting” Change the “File system” to “NTFS”. Change the “Volume label” to what you want the drive to be named. Click the checkbox for “Perform a quick format”. Click “Next”.



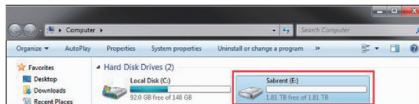
8. Click “Finish”. Windows will now begin formatting and initializing the disk.



Volume	Layout	Type	File System	Status	Capacity	Free Space	% Free
(C:)	Simple	Basic	NTFS	Healthy (Boot, Page File, Crash Dump, Primary Partition)	148.91 GB	92.12 GB	62 %
Driver (D:)	Simple	Basic	CDFS	Healthy (Primary Partition)	443 MB	0 MB	0 %
Sabrent (E:)	Simple	Basic	NTFS	Healthy (Primary Partition)	1863.01 GB	1862.87 GB	100 %
System Reserved	Simple	Basic	NTFS	Healthy (System, Active, Primary Partition)	100 MB	71 MB	71 %

<b>Disk 1</b> Basic 1863.02 GB Online	<b>Sabrent (E:)</b> 1863.01 GB NTFS Healthy (Primary Partition)
--	---

9. Open “My Computer” and verify that the drive shows up properly.



If the drive has already been formatted, you can skip these steps.

1. Check the “Device Manager” to make sure the “USB mass Storage Device” driver appears under the “Universal Serial Bus Controllers” section. Also check that the drive shows up under “Disk drives” as a “(Hard drive model number) USB Device”. There should be no error message in your Device manager, such as a bold ? or !.



2. You may also need go change the HDD settings from Dynamic to Basic, then format NTFS, and give it a drive letter, but you should back up the data on your drive before doing this. To convert the disk from Dynamic to Basic follow the instructions at the link included.

<http://sabrent.com/support/knowledgebase.php?article=58>

3. Please Note: Make sure to disable disk drive password protection

## Frequently Asked Questions:

1. My drive died or was damaged in my previous computer. Will it work with this adapter?

This adapter is the equivalent of plugging in the drive directly into your computer's IDE or SATA port. If the drive was damaged to the point where it doesn't work when plugged directly into the computer., then it is likely that it will not work using this adapter.

2. I set my IDE drive's Jumper to the Master setting, but it still doesn't show up on my computer.

Usually you will have to set the Jumper to Master, but depending on the specific drive and the specific settings of the computer, you may have to set it to Slave or Cable Select.

3. My drive doesn't show up on my computer, but it has data and works elsewhere.

Make sure you are connecting the Hard Drive into the correct sequence: First connect the power supply, and then connect the USB Cable to the computer.

**PLEASE CONTACT OUR TECHNICAL SUPPORT TEAM  
FOR ADDITIONAL TROUBLESHOOTING**